

UK Biodiversity Partnership
7-8 October, York University **Conference 2009**

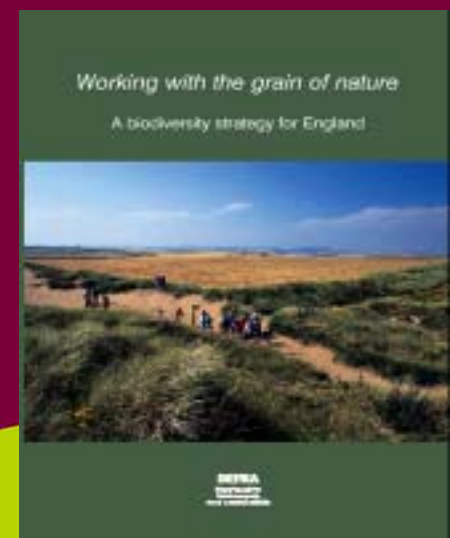


Pete Brotherton
Natural England



Country Group Update – England

Pete Brotherton
On behalf of the
England Biodiversity Group





Securing biodiversity

A new framework for delivering priority habitats
and species in England

www.naturalengland.org.uk



Aims of the new delivery framework



- Keep the best bits of UK BAP
 - clear priorities
 - targeted approach
 - delivery in partnership
- Achieve a step change in delivery to halt and then reverse biodiversity loss.
Why have we failed?
 - Our priority habitats are often poorly managed (especially outside of designated sites) and continue to be lost
 - We are seeing ongoing declines in our wider countryside and urban environments
 - Our marine environment is largely unprotected and exploited unsustainably

Main approaches



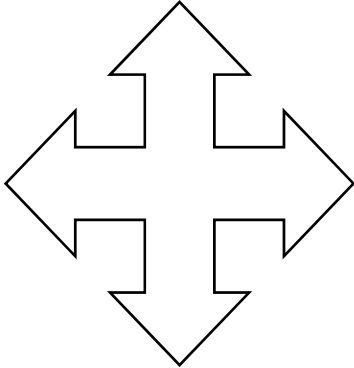
- Think BIG – develop large landscape-scale projects within which to focus the delivery of habitat expansion and restoration
- Enhance recovery of species by better integrating their needs into habitat-based work where appropriate, and with targeted recovery work where necessary
- Improve integration of national, regional, local levels of delivery, with strong partnerships
- Embed biodiversity into the decisions and policies of all sectors
- *Operationalise the ecosystem approach*





EBS Workstreams

Species
recovery
(Taxon Group)



Regional
and local

Biodiversity
Integration
Group

England biodiversity strategy workstreams



- Six sector workstreams
 - Agriculture, Coastal, Marine, Wetlands, Woodlands, Urban
- Five cross-cutting workstreams
 - Education & public understanding, Economics, Local & regional, Climate Change, Business
- Responsible for improving the policy environment and embedding biodiversity in decisions and actions

Embedding biodiversity – progress



- New biodiversity indicator for local authorities (NI 197) and review of Biodiversity Duty underway
- Progress with National Planning Statements (e.g. Eco-towns: net gain for biodiversity)
- Biodiversity Offsets report
- International Year of Biodiversity – partnership coordinated by NHM

Biodiversity Integration Groups



Nine groups (lead organisation):

Lowland farmland (NE)

Uplands (NE)

Lakes and ponds (EA)

Rivers (EA)

Wetlands (NE)

Coastal (NE)

Marine (NE)

Urban & brownfield
(NE)

Woodland (FC)

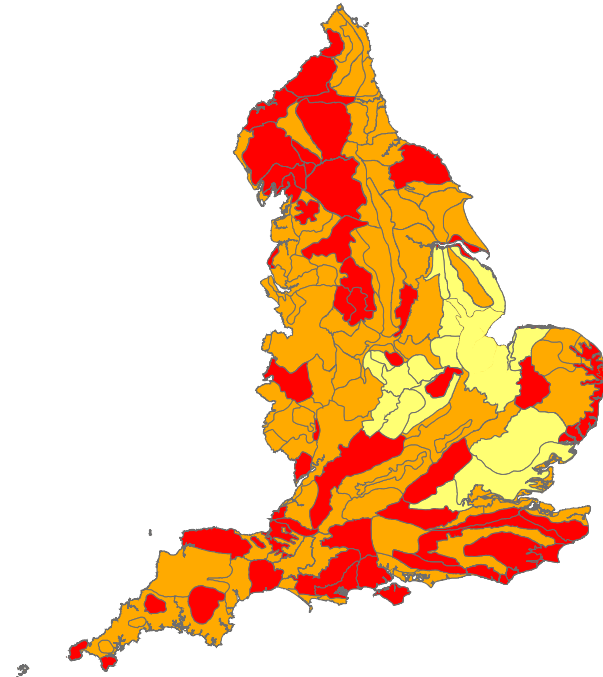
- Identify priorities and drive target delivery of habitats and associated species



Integration groups - progress



- Four dedicated integration leaders to work across groups
- Habitat and species data compilation to identify key areas for delivery (informed by expert opinion)





Integration Group progress

- Four dedicated integration leaders to work across groups
- Habitat and species data compilation to identify key areas for delivery (informed by expert opinion)
- Some landscape-scale delivery work already initiated
 - E.g. £4 million NE funding for four wetland vision mosaics announced this year



Species recovery



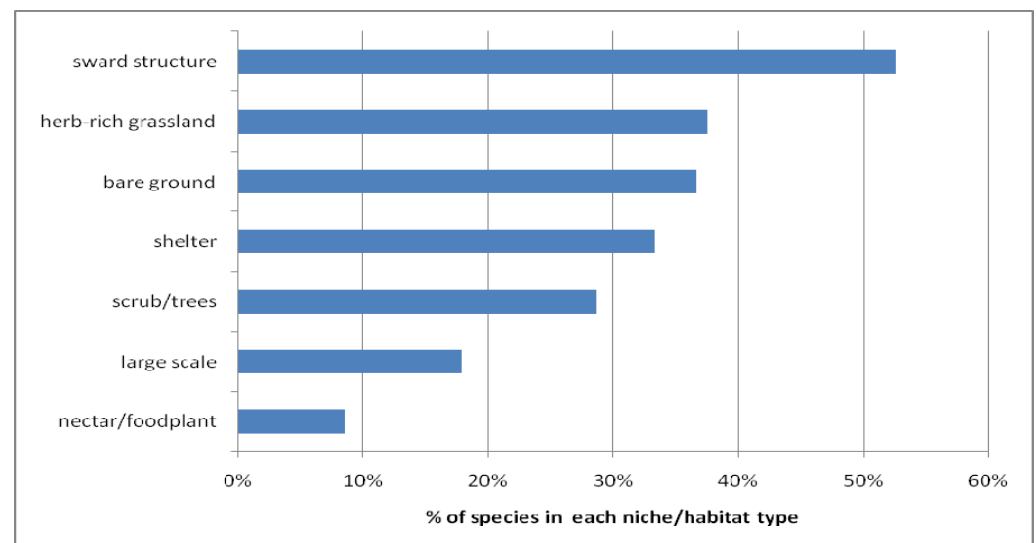
- Where possible priority species' needs will be integrated into habitat or site-based work
- Additional targeted species recovery work (e.g. reintroductions and research) is being prioritised by expert groups
- We will not work on all 943 English priority species now



Species recovery - progress



- Analysis of priority species niche requirements about to be published for each habitat type
- Ongoing and new targeted species recovery
- Significant progress with improving access to data to support management and protection efforts



Regional and Local Delivery



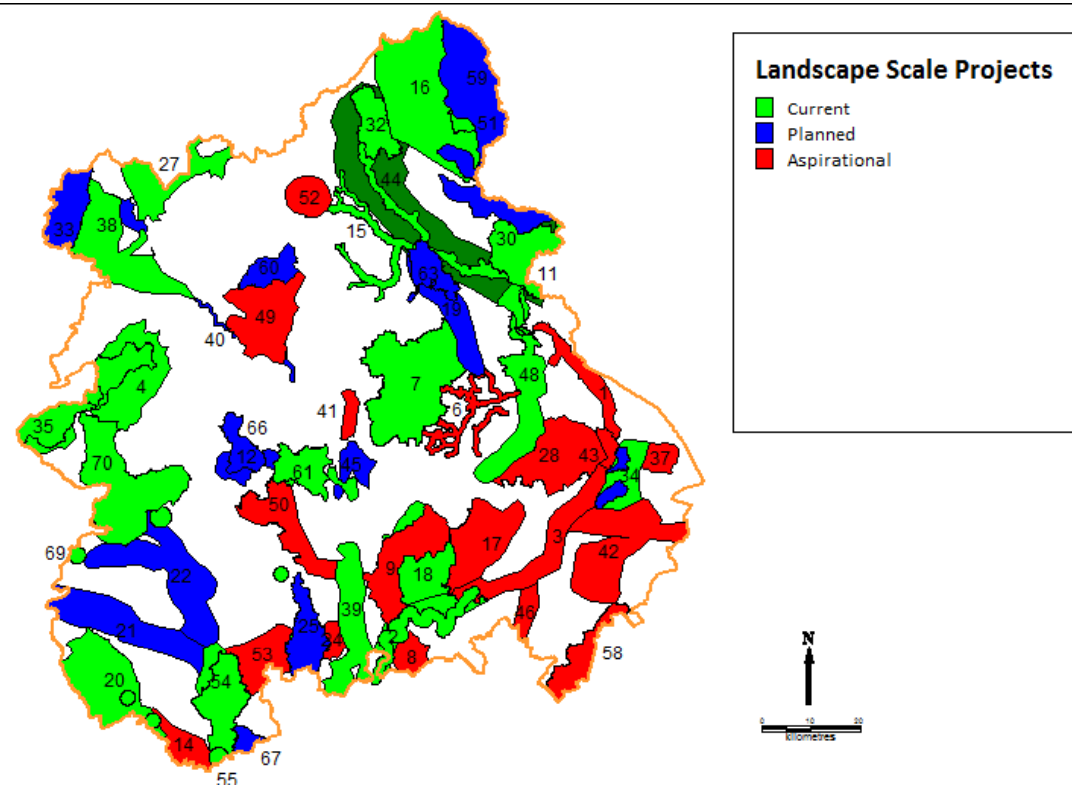
- Integrated, ecosystem approach can only be coordinated and delivered at regional and local levels
- Key task is to work with BIGs to develop a delivery plan with agreed accountabilities
 - Focus on landscape-scale projects
 - Locate these where they are good for biodiversity and good for people – multiple benefits



Regional and Local - progress



- All regions have 'opportunity maps'
- Most regions have BAP habitat targets embedded into Regional Spatial Strategies



Next steps



2009/10 August September October November December January February

