

UK Biodiversity Partnership
7-8 October, York University **Conference 2009**



Liz Howe
CCW



Bioamrywiaeth Cymru
Biodiversity Wales



PARTNERIAETH BIOAMRYWIAETH CYMRU

WALES BIODIVERSITY PARTNERSHIP



Llywodraeth Cynulliad Cymru
Welsh Assembly Government

CORFF IORDEDIC | SPONSORED BODY

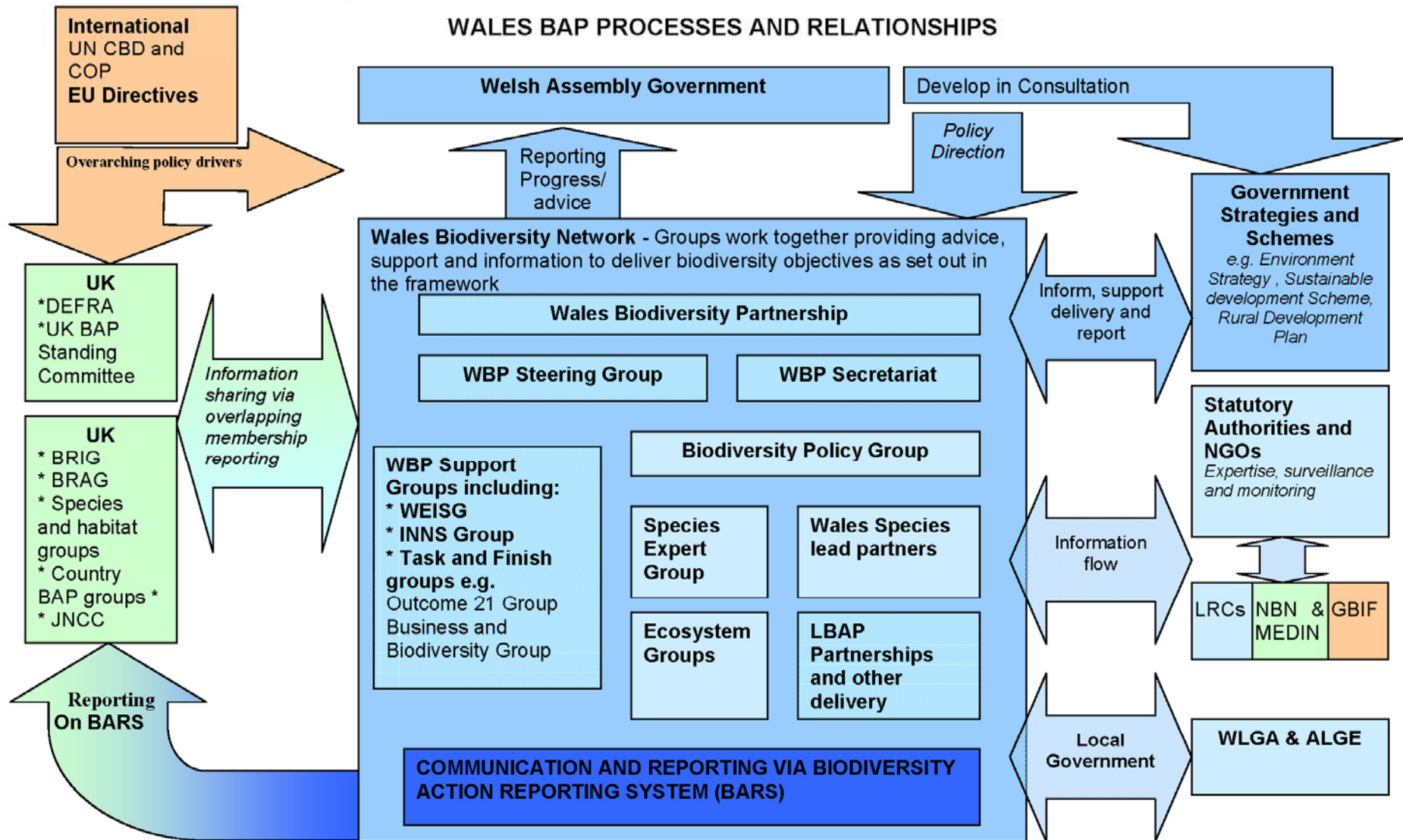
Country Group Update 2009 Wales



© Stuart Smith/CCW

Dr Liz Howe, CCW

WALES BAP PROCESSES AND RELATIONSHIPS





© Stewart Campbell/CCW



Bioamrywiaeth Cymru
Biodiversity Wales



PARTNERIAETH BIOAMRYWIAETH CYMRU
WALES BIODIVERSITY PARTNERSHIP



Llywodraeth Cynulliad Cymru
Welsh Assembly Government

LLODDIFF HOCCEEDIKI | SPONSORED BODY

Progress with the process



- Groups- all set up and met 2 or 3 times. Each has representation across the range of Welsh organisations and a contact for LBAPs
- Ecosystem Groups – working on prioritising actions, incorporating species needs and identifying major policy blockages
- Species Expert Group – information on species needs to ESG, setting targets and identifying Lead Partners. Identifying major policy blockages

Bioamrywiaeth Cymru
Biodiversity Wales



PARTNERIAETH BIOAMRYWIAETH CYMRU
WALES BIODIVERSITY PARTNERSHIP



Llywodraeth Cynulliad Cymru
Welsh Assembly Government
LLODDI'N DODDDEDDI'N DODDDEDDI'N DODDDEDDI'N



© Peter Jones/CCW



Cyngor Cefn Cwlad Cymru
Countryside Council for Wales

Bioamrywiaeth Cymru
Biodiversity Wales



PARTNERIAETH BIOAMRYWIAETH CYMRU
WALES BIODIVERSITY PARTNERSHIP



Llywodraeth Cynulliad Cymru
Welsh Assembly Government

LLODDI'N LLOCCEDDI | SPONSORED BY YOU

Progress with the process



- Policy Group- met 3 times, producing Checklists on Biodiversity Duty and workshop packs, looking at the priority policy issues identified by other groups and determining actions required to unblock progress
- Support Groups- Information, Invasive Non Native Species, Business and Biodiversity, Outcome 21 (favourable condition for designated sites)

Bioamrywiaeth Cymru
Biodiversity Wales



PARTNERIAETH BIOAMRYWIAETH CYMRU
WALES BIODIVERSITY PARTNERSHIP



Llywodraeth Cynulliad Cymru
Welsh Assembly Government
LLODDI'N HOCCEIDI | SPONSORED BODY



© Jan Sherry/CCW



Cyngror Cefn Cwlad Cymru
Countryside Council for Wales

Bioamrywiaeth Cymru
Biodiversity Wales



PARTNERIAETH BIOAMRYWIAETH CYMRU
WALES BIODIVERSITY PARTNERSHIP



Llywodraeth Cynulliad Cymru
Welsh Assembly Government

LORIFF NICEEIRI | SPONSORED BODY

Next Steps and Initiatives



- Protocols for communication- all Groups have space on the WBP website and a set of protocols for establishing and maintaining maximum communication between the relevant parts has been drafted. BARS remains central to delivery and reporting
- The Groups have been recognised as official consultees on WAG policy initiatives that impact on Biodiversity
- The Framework will be redrafted to reflect the new structures

Bioamrywiaeth Cymru
Biodiversity Wales



PARTNERIAETH BIOAMRYWIAETH CYMRU
WALES BIODIVERSITY PARTNERSHIP



Llywodraeth Cynulliad Cymru
Welsh Assembly Government
LLODDI'N HOCCEIDI'N | SPONSORED BODY

Next Steps and Initiatives



© Davey Martin



© Davey Martin



© Davey Martin

Blockage to BAP action- not enough lichenologists
Policy Group Solution – lichen apprentice scheme

Bioamrywiaeth Cymru Biodiversity Wales



PARTNERIAETH BIOAMRYWIAETH CYMRU
WALES BIODIVERSITY PARTNERSHIP



Llywodraeth Cynulliad Cymru
Welsh Assembly Government

YSGRIFODDORION YSGRIFODDORION